

# **1 Year MA Acting Graduates 2019**

**ArtsEd**



# 1 Year MA Acting Graduates 2019

## Welcome

ArtsEd is a world-renowned centre of excellence for training in the performing arts. The ArtsEd MA Acting course focusses on building versatile performers by developing their voice and identity to become bold, brave and ready for the industry.

**For further information on any of our Acting Graduates please contact us:**

020 8987 6663  
[Imcquire@artsed.co.uk](mailto:Imcquire@artsed.co.uk)  
[artsed.co.uk](http://artsed.co.uk)

## MA Performances

### **MA Acting Showcase**

Wednesday 8 May 2019, 1pm  
Leicester Square Theatre

### **Machinal**

By Sophie Treadwell  
Directed by Jess Edwards  
20-22nd June 2019, at 7:30pm

The Andrew Lloyd Webber  
Foundation Theatre

### **Andorra**

By Max Frisch  
Directed by Andrew Whyment  
27-29 June 2019, at 7.30pm

The Andrew Lloyd Webber  
Foundation Theatre





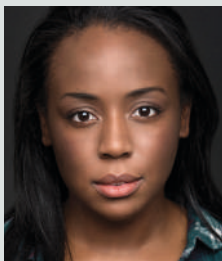
1

Jessica Arthur



3

Isaac Beechey



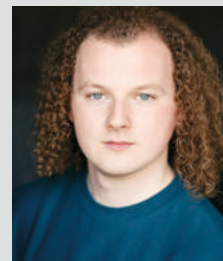
5

Adei Bundy



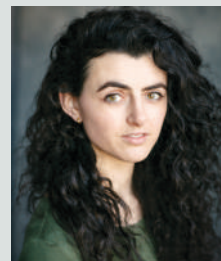
7

Lucie Capel



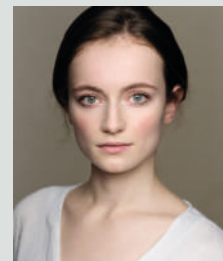
33

Jack Moylan



35

Moa Myerson



37

Emma Nihill



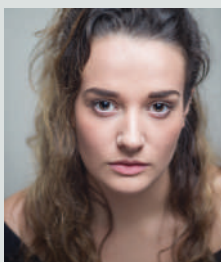
39

Jasmine Raymond



9

Alex Chance



11

Venetia Cook



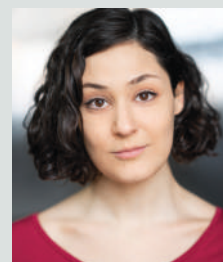
13

Rob Dempsey



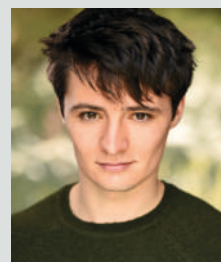
15

Brandon Dodsworth



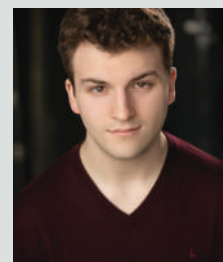
41

Tina Rizzo



43

George Seymour



45

Christopher Shepherd



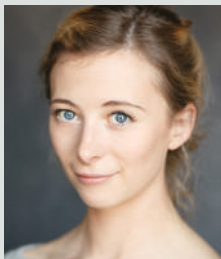
47

Sara Sioufi



17

Tom Haig



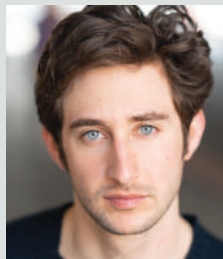
19

Marie Hamilton



21

Katherine Lea



23

Elrik Lepercq



49

Laurence Smyth



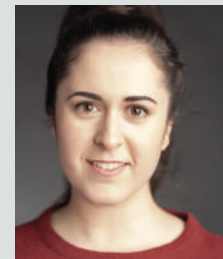
51

Anna Tammela



53

Su Tuncer



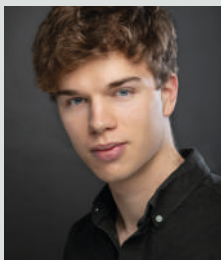
55

Pati Vallejo



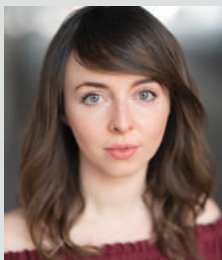
25

Sam Lockwood



27

Christian Loveless



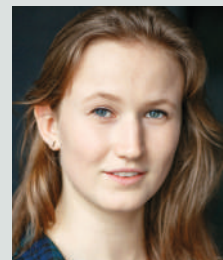
29

Ellen McLeod



31

Chris McQuillan



57

Anna-Rose van der Wiel



59

Erin Welch



# Jessica Arthur

## Height

5'8 ft

## Hair

Brunette

## Eyes

Green

## Nationality

British

## Natural Accent

British

(Kentish)

## Playing Age

19-29

Part / Title	Production
<b>Roles at Drama School</b>	
Renevskaya	The Cherry Orchard Directed by Miriam Lucia
Cavale	Cowboy Mouth Directed by Stephen Hudson
Charmian	Antony & Cleopatra Directed by Ng Choon Ping
<b>Original Work at Drama School</b>	
Silent Word	By On a Budget Theatre
<b>Workshops/Other Experience</b>	
Solo Poetry Show	The Human Race

## Special skills

Accents	RP, General American
Singing	Mezzo-Soprano
Dance	Tap, Musical Theatre style, Contemporary
Stage combat	BADC Level 1
Sports	Swimming, Horse Riding, Netball
Other	Spoken Word Artist





# Isaac Beechey

**Height**

5'11 ft

**Hair**

Brunette

**Eyes**

Green

**Nationality**

British

**Natural Accent**

Birmingham

**Playing Age**

17-27

**Part / Title****Production****Roles at Drama School**

Lopakhin

The Cherry Orchard

Directed by Stephen Hudson

Shooter

Action

Directed by Miriam Lucia

Antony

Antony &amp; Cleopatra

Directed by Ng Choon Ping

**Original Work at Drama School**

UnMasc

By S.A.V.I.G.E Theatre

**Workshops/Other Experience**

Roy

Hope (UCLan)

Directed by Graham Gill

Jesus

Godspell (UCLan)

Directed by Mark Goggins

**Special skills**

Accents

RP, Liverpoolian, Brummie, Cockney, General American

Singing

Tenor

Stage combat

BADC Level 1

Sports

Rugby, Football, Tennis, Cycling, Swimming

Other

Driving License, 1:1 BA(Hons) in Music Theatre (UCLan), Voice-over



# Adei Bundy

## Height

5'4 ft

## Hair

Black

## Eyes

Dark Brown

## Nationality

British

## Natural Accent

Yorkshire

## Playing Age

20-30

Part / Title	Production
<b>Roles at Drama School</b>	
Ranyevskaya	The Cherry Orchard Directed by Stephen Hudson
Shooter	Action Directed by Miriam Lucia
Ophelia	Hamlet Directed by Karen Tomlin
<b>Original Work at Drama School</b>	
UnMasc	By S.A.V.I.G.E Theatre
<b>Workshops/Other Experience</b>	
Prank Bride	Don't Tell the Bride-TV Directed by Mike Parker
Tilly	Cadence-Short Film By Siskamedia and AA Charitable Trust
Store Manager	Sainsbury's: Acid Attack Training Directed by Lisa Johnson
Participant	2 Day Voice-over Workshop By Gin Hammond
<b>Special skills</b>	
Accents	Yorkshire (Leeds), General American
Singing	Alto
Stage combat	BADC Level 1





# Lucie Capel

## Height

5'6 ft

## Hair

Dark Blonde

## Eyes

Blue

## Nationality

British

## Natural Accent

RP

## Playing Age

34-44

## Part / Title

## Production

### Roles at Drama School

Ranyevskaya

The Cherry Orchard

Directed by Stephen Hudson

Cavale

Cowboy Mouth

Directed by Miriam Lucia

Soothsayer / Agrippa/

Antony & Cleopatra

Diomedes / Clown

Directed by Ng Choon Ping

### Original Work at Drama School

A Womb With A View

By The Cherry Slush Club

### Workshops/Other Experience

Attendee

Moscow Art Theatre Summer  
Intensive Course

Mother (Voice-over), Angel Z

By Great Moscow State Circus

### Special skills

Accents

London, Norfolk, Liverpoolian

Languages

Russian, German, French

Stage combat

BADC Level 1

Sports

Swimming, Netball

Other

Qualified Primary School Teacher and Forest School Leader





# Alex Chance

**Height**  
6'3 ft

**Hair**  
Brunette

**Eyes**  
Blue

**Nationality**  
British

**Natural Accent**  
RP/Teeside

**Playing Age**  
35-45

Part / Title	Production & Director
<b>Roles at Drama School</b>	
Lopakhin	The Cherry Orchard Directed by Miriam Lucia
Shooter	Action Directed by Stephen Hudson
Polonius/Ghost	Hamlet Directed by Karen Tomlin
<b>Original Work at Drama School</b>	
Open Return	By Back to The Drawing Board
<b>Workshops/Other Experience</b>	
James	Harper Regan Directed by Holly Wilson
Guildenstern	Rosencrantz and Guildenstern Directed by Glynne Steele
Oberon	A Midsummer Night's Dream Directed by Mark Kane
<b>Special skills</b>	
Accents	RP, General American, Southern American, Cockney, Scottish
Languages	Brazilian Portuguese
Singing	Baritone
Stage combat	BADC Level 1
Sports	Swimming, Cycling
Other	Pianist, Songwriter, Novelist, BA (Hons) English Literature (Goldsmiths), Screen Acting Course (LAMDA), Full Driving License



# Venetia Cook

## Height

5'6 ft

## Hair

Brunette

## Eyes

Brown

## Nationality

British

## Natural Accent

RP

## Playing Age

17-28

Part / Title	Production & Director
<b>Roles at Drama School</b>	
Varya	The Cherry Orchard Directed by Stephen Hudson
Liza	Action Directed by Miriam Lucia
Hamlet/Guildenstern	Hamlet Directed by Karen Tomlin
<b>Original Work at Drama School</b>	
UnMasc	By S.A.V.I.G.E Theatre
<b>Workshops/Other Experience</b>	
Petra	Demons Directed by Tom Cornford
Sarah	The Greenville Ghost Directed by Rory McGregor
Cornet	The Provoked Wife Directed by Michael Cordner
Annie	Each Our Own Devil Directed by Tom Leatherbarrow
<b>Special skills</b>	
Accents	RP, General American, Yorkshire
Singing	Mezzo-Soprano
Stage combat	BADC Level 1
Sports	Football, Skiing, Yoga
Other	Puppetry, Writing, Directing





# Rob Dempsey

## Height

5'10 ft

## Hair

Brunette

## Eyes

Hazel

## Nationality

British

## Natural Accent

RP

## Playing Age

24-34

## Part / Title

## Production & Director

### Roles at Drama School

Lopakhin

The Cherry Orchard

Directed by Stephen Hudson

Slim

Cowboy Mouth

Directed by Miriam Lucia

Antony

Antony & Cleopatra

Directed by Ng Choon Ping

### Original Work at Drama School

Shaping Dust

By Seismic Theatre

### Workshops/Other Experience

Multiple Parts

Stomp

By Luke Cresswell & Steve Nicholas

### Special skills

Accents

RP, General American, Scottish, Australian, Estuary

Dance

Body Percussion

Stage combat

BADC Level 1

Sports

Football, Badminton, Rugby, Weight-lifting, Cycling, Bouldering, Swimming

Other

Horse Riding, Drumming, Scuba Diving, Full Driving License





# Brandon Dodsworth

## Height

6 ft

## Hair

Red/Titian

## Eyes

Green/Blue

## Nationality

British

## Natural Accent

Yorkshire  
(Sheffield)

## Playing Age

17-25

## Part / Title

## Production & Director

### Roles at Drama School

Yasha

The Cherry Orchard

Directed by Miriam Lucia

Slim

Cowboy Mouth

Directed by Stephen Hudson

Octavius Caesar

Antony & Cleopatra

Directed by Ng Choon Ping

### Original Work at Drama School

Fractured

By Seismic Theatre

### Workshops/Other Experience

Knight

King Lear (RSC 2016/18)

Directed by Greg Doran

Roman Citizen

Julius Ceasar (RSC 2017)

Directed by Angus Jackson

Roman Citizen

Coriolanus (RSC 2017)

Directed by Angus Jackson

Florizel

The Winter's Tale

Directed by Charles Morton

Conrade

Much Ado about Nothing

Directed by James Corrigan

### Special skills

Accents

Yorkshire, RP, General American, Scottish

Singing

Tenor

Stage combat

BADC Level 1

Sports

Cycling, Skiing, Horse Riding

Other

Full Driving License, Piano, 1:1 BA (Hons) English Literature & Drama (The University of Birmingham)



# Tom Haig

## Height

6 ft

## Hair

Blond

## Eyes

Blue/Grey

## Nationality

British

## Natural Accent

RP

## Playing Age

20-30

### Part / Title

### Production & Director

#### Roles at Drama School

Lopakhin

The Cherry Orchard

Directed by Stephen Hudson

Slim

Cowboy Mouth

Directed by Miriam Lucia

Antony

Antony &amp; Cleopatra

Directed by Ng Choon Ping

#### Original Work at Drama School

Open Return

By Back to the Drawing Board

#### Workshops/Other Experience

Giovanni

T'is Pity She's a Whore

Directed by Alice Woodhouse

Osbourne

Journey's End

Directed by Jessica Burrage

Benedick

Much Ado About Nothing

Directed by Ryan O'Grady

Father Welsh

The Lonesome West

Directed by Josh Overton

#### Special skills

Accents

RP, General American, Edinburgh, Northern, German

Singing

Bass

Stage combat

BADC Level 1

Sports

Fencing, Chess

Other

Sailing, Poetry (Spoken Word), Audiobooks





# Marie Hamilton

**Height**  
5'5 ft

**Hair**  
Blonde

**Eyes**  
Blue

**Nationality**  
British

**Natural Accent**  
RP

**Playing Age**  
20-30

Part / Title	Production & Director
<b>Roles at Drama School</b>	
Ranevskaya	The Cherry Orchard Directed by Stephen Hudson
Jeep	Action Directed by Miriam Lucia
Cleopatra	Antony & Cleopatra Directed by Ng Choon Ping
<b>Original Work at Drama School</b>	
we don't have to do this	by District Theatre
<b>Workshops/Other Experience</b>	
Ensemble (Cover Lucy & Mrs Beaver)	The Lion, The Witch, and The Wardrobe Directed by Sally Cookson, West Yorkshire Playhouse
Lucy Lockit/ Macheath / Mrs. Ducat	Polly: The Heartbreak Opera Directed by Stephanie Kempson, Bristol Old Vic
Marie	Three Sisters Intervention By RashDash, Tobacco Factory
Beauty	Beauty and the Beast Directed by Kate O'Connor, GLYPT
Viola	Twelfth Night Directed by Ian McGlynn, Rondo, Bath
Magdalena	Last Words You'll Hear Directed by Whitney Mosery, Almeida
<b>Special skills</b>	
Accents	Heightened RP, General American, Sheffield
Languages	French Conversational
Singing	Mezzo-Soprano
Stage combat	BADC Level 1
Sports	Running, Yoga, Netball
Other	Actor-Singer, Devising, Puppetry, Basic Aerial Silks & Hoop, Radio Drama





# Katherine Lea

**Height**  
5'2 ft

**Hair**  
Brunette

**Eyes**  
Hazel

**Nationality**  
British

**Natural Accent**  
RP

**Playing Age**  
16-25

Part / Title	Production & Director
<b>Roles at Drama School</b>	
Anya	The Cherry Orchard Directed by Stephen Hudson
Liza	Cowboy Mouth Directed by Miriam Lucia
Hamlet	Hamlet Directed by Karen Tomlin
<b>Original Work at Drama School</b>	
Shaping Dust	By Fancy Another?
<b>Workshops/Other Experience</b>	
Self	A Pint Sized Conversation Directed by Dylan Frankland
Emily	Vera Vera Vera Directed by Poppy Harrison
Myra	Colder Than Here Directed by Martin Harvey
Tupolski	The Pillowman Directed by Will Jarvis
<b>Special skills</b>	
Accents	RP, General American, Essex, Australian
Languages	French
Singing	Mezzo-Soprano
Dance	Ballet, Pointe, Tap, Contemporary
Stage combat	BADC Level 1
Sports	Swimming, Horse Riding
Other	BA (Hons) English and Drama (University of Exeter)



# Elrik Lepercq

**Height**  
6'6 ft

**Hair**  
Brunette

**Eyes**  
Blue

**Nationality**  
French

**Natural Accent**  
French

**Playing Age**  
20-30

Part / Title	Production & Director
<b>Roles at Drama School</b>	
Gaev	The Cherry Orchard Directed by Stephen Hudson
Slim	Cowboy Mouth Directed by Miriam Lucia
King Claudius	Hamlet Directed by Karen Tomlin
<b>Original Work at Drama School</b>	
Shaping Dust	By Fancy Another?
<b>Workshops/Other Experience</b>	
Antoine	Les Roses Blanches Directed by Sarah Pepe
Martin	La Joie de Vivre Directed by Tessa Volkine
Benjamin	Martyr Directed by Laura Monfort
The Creator	Animeli Directed by Laura Monfort and Sebastian Guighard
<b>Special skills</b>	
Accents	RP, French, Russian
Languages	Russian
Singing	Bass Baritone
Stage combat	BADC Level 1
Sports	Horseback Riding
Other	Piano, Voice-over





# Sam Lockwood

**Height**  
6'1 ft

**Hair**  
Brunette

**Eyes**  
Brown

**Nationality**  
British

**Natural Accent**  
RP

**Playing Age**  
17-26

Part / Title	Production & Director
<b>Roles at Drama School</b>	
Trofimov	The Cherry Orchard Directed by Miriam Lucia
Slim	Cowboy Mouth Directed by Stephen Hudson
Claudius / Rosencrantz	Hamlet Directed by Karen Tomlin
<b>Original Work at Drama School</b>	
UnMasc	By S.A.V.I.G.E Theatre
<b>Workshops/Other Experience</b>	
Francis Bacon	Bacon Directed by Tommy Loftus
Jason	Relive Directed by Andrew McGee
Romeo	Romeo & Juliet Directed by Stephen Horne
Bernado	West Side Story Directed by Philip Dale
<b>Special skills</b>	
Accents	RP, General American, Australian, Irish, Essex, Estuary
Singing	High Baritone
Stage combat	BADC Level 1
Sports	American Football, Athletics, Badminton, Diving, Running
Other	Choreography (Tap), Compèring, Full Driving License, Radio Presenting, Voice-over, BA (Hons) History (University of Warwick)





# Christian Loveless

## Height

5'11 ft

## Hair

Dark Blond

## Eyes

Blue/Grey

## Nationality

British

## Natural Accent

Buckinghamshire

## Playing Age

17-24

## Part / Title

## Production & Director

### Roles at Drama School

Trofimov

The Cherry Orchard

Directed by Stephen Hudson

Slim

Cowboy Mouth

Directed by Miriam Lucia

King Claudius

Hamlet

Directed by Karen Tomlin

### Original Work at Drama School

we don't have to do this

By District Theatre

### Workshops/Other Experience

Y

There Has Possibly Been  
An Incident

Directed by Julia Levai,  
Blue Elephant Theatre

Participant

Voice-over Acting Course  
By Gin Hammond

### Special skills

Accents	RP, General American, Buckinghamshire
Languages	Spanish, French
Singing	Tenor
Stage combat	BADC Level 1
Sports	Football
Other	Actor-Singer, Devising



# Ellen McLeod

**Height**  
4'11 ft

**Hair**  
Light Brown

**Eyes**  
Green

**Nationality**  
British

**Natural Accent**  
Hertfordshire

**Playing Age**  
15-25

Part / Title	Production & Director
<b>Roles at Drama School</b>	
Dunyasha	The Cherry Orchard Directed by Stephen Hudson
Cavale	Cowboy Mouth Directed by Miriam Lucia
Hamlet	Hamlet Directed by Karen Tomlin
<b>Original Work at Drama School</b>	
Shaping Dust	By Fancy Another?
<b>Workshops/Other Experience</b>	
Ensemble	Lapland UK Directed by Maria Lopiano
Performer	You Will Fail Her, DYSPLA Directed by Lennie Varvarides
Actor/Puppeteer	Caryiatid Unplugged Directed by Evi Stamatiou
Ensemble	Patience Directed by Colin Jagger
Tenant	The Tenants Directed by Evi Stamatiou

<b>Special skills</b>	
Accents	RP, General American, Hertfordshire
Singing	Mezzo-Soprano
Dance	Ballet
Stage combat	BADC Level 1
Sports	Horse-riding, Swimming
Other	Trumpet, Full Driving License





# Chris McQuillan

**Height**  
5'10 ft

**Hair**  
-

**Eyes**  
Blue / Green

**Nationality**  
Irish / British

**Natural Accent**  
N. Ireland

**Playing Age**  
35-45

Part / Title	Production & Director
<b>Roles at Drama School</b>	
Simeonov-Pishchik	The Cherry Orchard Directed by Miriam Lucia
Slim	Cowboy Mouth Directed by Stephen Hudson
Mark Antony / Maecenas	Antony & Cleopatra Directed by Ng Choon Ping
<b>Original Work at Drama School</b>	
Silent Word	By On A Budget Theatre
<b>Workshops/Other Experience</b>	
M	Lungs Directed by Juliet Knight
Tom	Motortown Directed by Holly Wilson
<b>Special skills</b>	
Accents	N. Irish, Irish, Scottish, RP, General American
Languages	Mandarin Chinese, French, Spanish, Romanian, Irish
Stage combat	BADC Level 1
Sports	Hurling, Gaelic Football
Other	Trained Barrister



# Jack Moylan

**Height**  
6'1 ft

**Hair**  
Light Brown

**Eyes**  
Blue

**Nationality**  
British

**Natural Accent**  
Midlands

**Playing Age**  
16-25

Part / Title	Production & Director
<b>Roles at Drama School</b>	
Yepikhodov	The Cherry Orchard Directed by Miriam Lucia
Slim	Cowboy Mouth Directed by Stephen Hudson
Enobarbus	Antony & Cleopatra Directed by Ng Choon Ping
<b>Original Work at Drama School</b>	
Open Return	By Back to The Drawing Board
<b>Workshops/Other Experience</b>	
Ren McCormack	Footloose West End Stage Summer School
The Arbiter	Chess West End Stage Summer School
Ensemble	NYMT Directed by Hannah Chissick
<b>Special skills</b>	
Accents	RP, General American, Yorkshire, Midlands
Singing	Baritone
Stage combat	BADC Level 1
Sports	Football, Karate, Rugby, Swimming, Badminton, Athletics
Other	Full Driving License, Spoken Word Poet, BA (Hons) Theatre & Creative Writing (Brunel University London)





# Moa Myerson

**Height**  
5'11 ft

**Hair**  
Dark Brown / Black

**Eyes**  
Hazel

**Nationality**  
British

**Natural Accent**  
Oxfordshire

**Playing Age**  
17-28

Part / Title	Production & Director
<b>Roles at Drama School</b>	
Anya / Dunyasha	The Cherry Orchard Directed by Stephen Hudson
Cavale	Cowboy Mouth Directed by Miriam Lucia
Cleopatra / Mardian	Antony & Cleopatra Directed by Ng Choon Ping
<b>Original Work at Drama School</b>	
Open Return	By Back to The Drawing Board
<b>Workshops/Other Experience</b>	
Attendee	Voice-over Course by Gin Hammond
Chorus	Antigone Directed by Nic Lloyd
Adelaide	Guys And Dolls Directed by Andy Reiss
Abigail	Crucible by Nic Lloyd
<b>Special skills</b>	
Accents	RP
Languages	Swedish
Singing	Mezzo-Soprano, Musical Theatre, Pop
Stage combat	BADC Level 1
Sports	Horse Riding, Bouldering
Other	BSc Biomedical Science



# Emma Nihill

**Height**  
5'8 ft

**Hair**  
Light Brown

**Eyes**  
Blue / Grey

**Nationality**  
Australian / Spanish

**Natural Accent**  
RP

**Playing Age**  
16-25

Part / Title	Production & Director
<b>Roles at Drama School</b>	
Dunyasha	The Cherry Orchard Directed by Miriam Lucia
Cavale	Cowboy Mouth Directed by Stephen Hudson
Hamlet	Hamlet Directed by Karen Tomlin
<b>Original Work at Drama School</b>	
Shaping Dust	By Fancy Another?
<b>Workshops/Other Experience</b>	
Lucy	SPACES Directed by Tallulah Vaughan
Kristine	A Doll's House Directed by Jon-Rhys Foster
Marnie	Birdland Directed by Isabel Foley
Rehearsed Reading of The Year of the Virgin	By Anton Burge, Charing Cross Theatre

<b>Special skills</b>	
Accents	Australian
Languages	Spanish
Singing	Mezzo-Soprano
Stage combat	BADC Level 1
Sports	Running, Rowing, Skiing
Other	Piano, Guitar





# Jasmine Raymond

**Height**  
5'7 ft

**Hair**  
Brunette

**Eyes**  
Dark Brown

**Nationality**  
British

**Natural Accent**  
London

**Playing Age**  
20-30

Part / Title	Production & Director
<b>Roles at Drama School</b>	
Ranyevskaya	The Cherry Orchard Directed by Stephen Hudson
Cavale	Cowboy Mouth Directed by Miriam Lucia
Cleopatra	Antony and Cleopatra Directed by Ng Choon Ping
<b>Original Work at Drama School</b>	
Shaping Dust	By Fancy Another?
<b>Workshops/Other Experience</b>	
Melinda	Pinky Directed by Zah Ahmad
Hero	Much Ado About Nothing Directed by Tom Jordan
Elesha	Kiss & Tell Directed by Francesca Marie Claire
Attendee	Voice-over Workshop Directed by Gin Hammond
<b>Special skills</b>	
Accents	RP, London
Singing	Mezzo-Soprano
Stage combat	BADC Level 1
Sports	Swimming, Basketball



# Tina Rizzo

**Height**  
5'2 ft

**Hair**  
Brunette

**Eyes**  
Brown

**Nationality**  
Maltese

**Natural Accent**  
Maltese

**Playing Age**  
17-28

Part / Title	Production & Director
<b>Roles at Drama School</b>	
Anya	The Cherry Orchard Directed by Stephen Hudson
Lupe	Action Directed by Miriam Lucia
Queen Gertrude	Hamlet Directed by Karen Tomlin
<b>Original Work at Drama School</b>	
Shaping Dust	By Fancy Another?
<b>Workshops/Other Experience</b>	
Beatrice	Much Ado About Nothing Directed by Philip Leone-Ganado
Diane	Birthday Suit Directed by Antony Bezzina
Attendee	Puppetry Workshop By Les Enfants Terribles
Attendee	Presence and Power Workshop Directed by Patsy Rodenburg
<b>Special skills</b>	
Accents	Maltese, RP, General American
Languages	Maltese
Singing	Alto
Stage combat	BADC Level 1





43

George Seymour

Height

5'8 ft

Hair

Brunette

Eyes

Dark Brown

Nationality

British

Natural Accent

Hertfordshire

Playing Age

17-27

Part / Title	Production & Director
Roles at Drama School	
Trofimov	The Cherry Orchard Directed by Stephen Hudson
Jeep	Action Directed by Miriam Lucia
Caesar	Antony & Cleopatra Directed by Ng Choon Ping
Original Work at Drama School	
UnMasc	By S.A.V.I.G.E Theatre
Workshops/Other Experience	
Rivers	Richard III Directed by Lata Nobles
Lead	Comedy Quickies Directed by Ira Pettle
Matt	Dog Sees God Directed by Jeff Silence
Eddie	Simon's Birthday Directed by Paul Rodgers
Special skills	
Accents	Cumbrian, Dublin, General Australian, General American
Languages	French, German
Singing	Bass
Stage combat	BADC Level 1
Sports	Snowboarding Instructor, Bouldering, Tennis, Rugby, Skiing, Swimming
Other	Acoustic Guitar, Electric Guitar, Piano, Full Driving License



# Christopher Shepherd

## Height

6 ft

## Hair

Brunette

## Eyes

Brown

## Nationality

British

## Natural Accent

RP

## Playing Age

20-30

Part / Title	Production & Director
<b>Roles at Drama School</b>	
Gaev	The Cherry Orchard Directed by Miriam Lucia
Slim	Cowboy Mouth Directed by Stephen Hudson
Horatio	Hamlet Directed by Karen Tomlin
<b>Original Work at Drama School</b>	
OutCast	By The Exiles
<b>Workshops/Other Experience</b>	
Mason	Hope Directed by Graham Gill
Brick	Cat on a Hot Tin Roof Directed by Mo Korede Sowole
Lead Ensemble	Godspell Directed by Mark Goggins
Ensemble	Sweeney Todd Directed by Paul Kerryson
<b>Special skills</b>	
Accents	RP, General American
Singing	Bass
Dance	Jazz, Contemporary
Stage combat	BADC Level 1





# Sara Sioufi

## Height

5'5 ft

## Hair

Black

## Eyes

Brown

## Nationality

Egyptian

## Natural Accent

General American

## Playing Age

18-26

### Part/Title

### Production & Director

#### Roles at Drama School

Varya

The Cherry Orchard

Directed by Stephen Hudson

Lupe

Action

Directed by Miriam Lucia

Cleopatra

Antony & Cleopatra

Directed by Ng Choon Ping

#### Original Work at Drama School

Fractured

Directed by Sara Sioufi and  
Brandon Dodsworth

#### Workshops/Other Experience

Lana

Reprieve

Directed by Esther Mackay

Lady Macbeth

Macbeth

Directed by Aly Spiro

Lead Ensemble

Godspell

Directed by Mark Goggins

Attendee

Voice-over Workshop

by Gin Hammond

#### Special skills

Accents

RP, General American, Arabic

Singing

Mezzo-Soprano

Sports

Boxing, Horseback Riding

Stage combat

BADC Level 1

Other

Writing



# Laurence Smyth

## Height

5'10 ft

## Hair

Black

## Eyes

Dark Brown

## Nationality

British

## Natural Accent

Hertfordshire

## Playing Age

25-30

Part / Title	Production & Director
--------------	-----------------------

### Roles at Drama School

Lopakhin	The Cherry Orchard Directed by Miriam Lucia
Jeep	Action Directed by Stephen Hudson
Laertes	Hamlet Directed by Karen Tomlin

### Original Work at Drama School

OutCast	By The Exiles
---------	---------------

### Workshops/Other Experience

Trevelyn	Love Play Directed by Mairi Hayes
David Filde	The Haunting Directed by Alistair Brown
Hibbert	Journey's End Directed by Jonathan Brown

### Special skills

Accents	RP, General American, Hertfordshire
Languages	German
Singing	High Baritone
Stage combat	BADC Level 1
Sports	Krav Maga
Other	Weapons Handling (Civillian, Police, Military & Special Ops)





# Anna Tammela

**Height**  
5'10 ft

**Hair**  
Brunette

**Eyes**  
Brown

**Nationality**  
British / Finnish

**Natural Accent**  
RP / London

**Playing Age**  
18-27

Part / Title	Production & Director
<b>Roles at Drama School</b>	
Anya	The Cherry Orchard Directed by Miriam Lucia
Cavale	Cowboy Mouth Directed by Stephen Hudson
Cleopatra	Antony & Cleopatra Directed by Ng Choon Ping
<b>Original Work at Drama School</b>	
Open Return	By Back to The Drawing Board
<b>Workshops/Other Experience</b>	
Audrey II	Little Shop of Horrors Directed by Marc Zayat
Beggar Woman	Sweeney Todd Directed by Marc Zayat
La Cienega	Bring It On Directed by Dana Hudson
Tituba	The Crucible Directed by Tom Williams
Receptionist	MotherFatherSon (BBC) Directed by James Kent
<b>Special skills</b>	
Accents	RP, General American, London, Southern American
Languages	Finnish
Singing	Mezzo-Soprano
Dance	Choreography, Commercial Dance
Stage combat	BADC Level 1
Sports	Swimming, Running, Gym Training
Other	Musical Theatre, Guitar, Full Driving License, Barista, Bartender



# Su Tuncer

## Height

5'5 ft

## Hair

Dark Brown

## Eyes

Brown

## Nationality

British / Turkish

## Natural Accent

London / RP

## Playing Age

18-30

## Part / Title

## Production & Director

### Roles at Drama School

Charlotta

The Cherry Orchard

Directed by Miriam Lucia

Cavale

Cowboy Mouth

Directed by Stephen Hudson

Hamlet

Hamlet

Directed by Karen Tomlin

### Original Work at Drama School

Open Return

By Back to The Drawing Board

### Workshops/Other Experience

Female Supporter

Get Luke Lowe

Directed by Drew V. Marke

Farah

Preservation

Directed by Gareth Kennerley

Emma/WPC

Germination

Directed by Gareth Kennerley

### Special skills

Accents

RP, General American, Turkish, Russian

Languages

German, Turkish, Russian, French

Singing

Mezzo-Soprano

Sports

Cricket, Rounders, Cycling

Other

Piano, Guitar, Voice-over Acting, Full Driving License, DBS (ORB) Clearance





# Pati Vallejo

**Height**  
4'11 ft

**Hair**  
Dark Brown

**Eyes**  
Brown

**Nationality**  
Spanish

**Natural Accent**  
Spanish

**Playing Age**  
20-30

Part / Title	Production & Director
<b>Roles at Drama School</b>	
Varya	The Cherry Orchard Directed by Miriam Lucia
Liza	Action Directed by Stephen Hudson
Ophelia	Hamlet Directed by Karen Tomlin
<b>Original Work at Drama School</b>	
A Womb With A View	By The Cherry Slush Club
<b>Workshops/Other Experience</b>	
Nina	Mi Alma en Otra Parte By CDN, (National Theatre Spain)
Amy (Voice-over)	Wordhunters By Thumbfood for PlayStation
Emily (Voice-over)	Criminal Minds
<b>Special skills</b>	
Accents	RP, General American, Spanish, Latin American
Languages	Spanish
Singing	Mezzo-Soprano
Dance	Jazz, Funk, Hip-Hop, Pole Dancing
Stage combat	BADC Level 1
Sports	Running, Cycling



# Anna-Rose van der Wiel

**Height**  
5'4 ft

**Hair**  
Dark Blonde

**Eyes**  
Blue

**Nationality**  
British/Dutch

**Natural Accent**  
RP

**Playing Age**  
16-25

Part / Title	Production & Director
--------------	-----------------------

**Roles at Drama School**

Anya	The Cherry Orchard Directed by Miriam Lucia
Lupe	Action Directed by Stephen Hudson
Cleopatra / Octavia	Antony & Cleopatra Directed by Ng Choon Ping

**Original Work at Drama School**

Shaping Dust	By Fancy Another?
--------------	-------------------

**Workshops/Other Experience**

Dahlia (Factory Worker)	Les Misérables Directed by Tom Shankland, BBC
Participant	Voice-over Acting Course By Gin Hammond

**Special skills**

Accents	RP, General American
Languages	Flemish, French, Dutch
Singing	Soprano
Dance	Ballet, Contemporary, Ballet Teacher (RAD)
Stage combat	BADC Level 1
Sports	Gymnastics





# Erin Welch

**Height**  
5'5 ft

**Hair**  
Brown

**Eyes**  
Hazel

**Nationality**  
British

**Natural Accent**  
RP

**Playing Age**  
16-25

Part / Title	Production & Director
<b>Roles at Drama School</b>	
Ranyevskya	The Cherry Orchard Directed by Miriam Lucia
Cavale	Cowboy Mouth Directed by Stephen Hudson
Hamlet	Hamlet Directed by Karen Tomlin
<b>Original Work at Drama School</b>	
UnMasc	By S.A.V.I.G.E Theatre
<b>Workshops/Other Experience</b>	
Gemma	Motherland Directed by Kate Barton
Elizabeth	Crucible Directed by Nikhil Vyas
Pippa	Auditions Directed by Hamish Clayton
Sharron	Home Directed by Leyling Lee
Caroline	A Year of Minutes Directed by Hamish Clayton

<b>Special skills</b>	
Accents	RP, General American, Scouse, Cockney, Cumbrian
Singing	Mezzo-Soprano
Dance	Contemporary, Hip Hop, Jazz, Modern
Stage combat	BADC Level 1
Sports	Netball
Other	Full Driving License, Voice-over









**ArtsEd**

14 Bath Road,  
London, W4 1LY

.....  
[artsed.co.uk](http://artsed.co.uk)  
[@ArtsEdLondon](https://www.instagram.com/ArtsEdLondon)